

SolarGate 20W

Kit d'alimentation solaire pour automatisme

Solar power alimentation kit

Kit d'alimentazione solare per automatismo

Kit de energía solar para automatismos



Solaire



Économie
d'énergie



Installation
facile

12-24
VOLTS



Ne pas brancher
sur du 230V



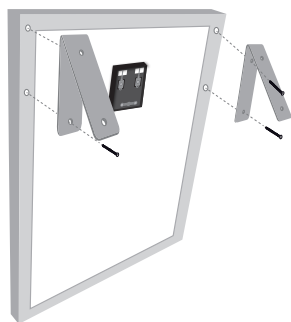
SolarGate 20W AAM00095

SOMMAIRE

A - Installation	3
B - Branchement général (multi-marques)	4
C - Branchement spécifique pour motorisation SCS Sentinel.....	5
D - Utilisation	7
E - Aide au dépannage	9
F- Assistance téléphonique.....	9
G- Garantie.....	9

A- INSTALLATION

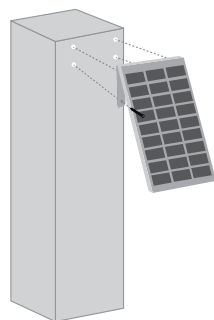
1



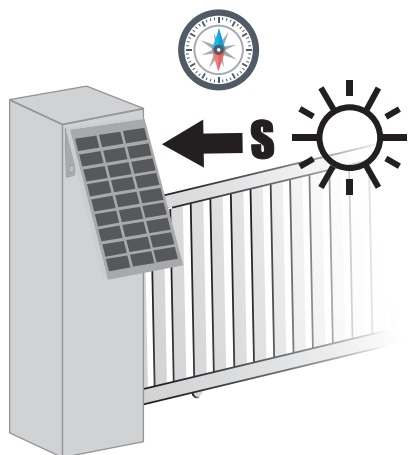
2



3



4



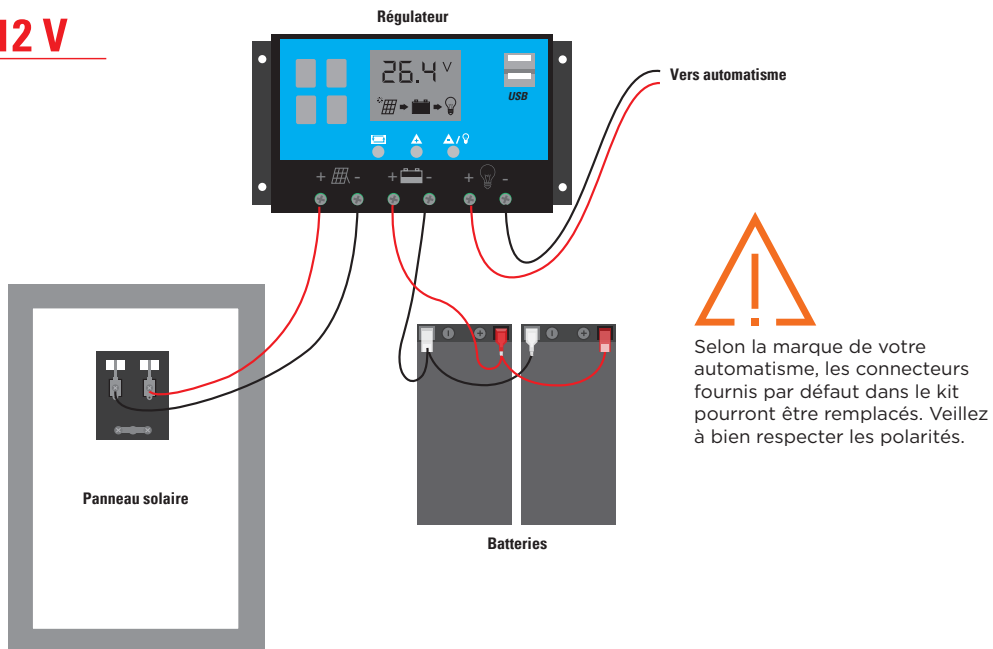
Installation
plein sud
obligatoire

Le panneau ne doit jamais
être exposé à l'ombre

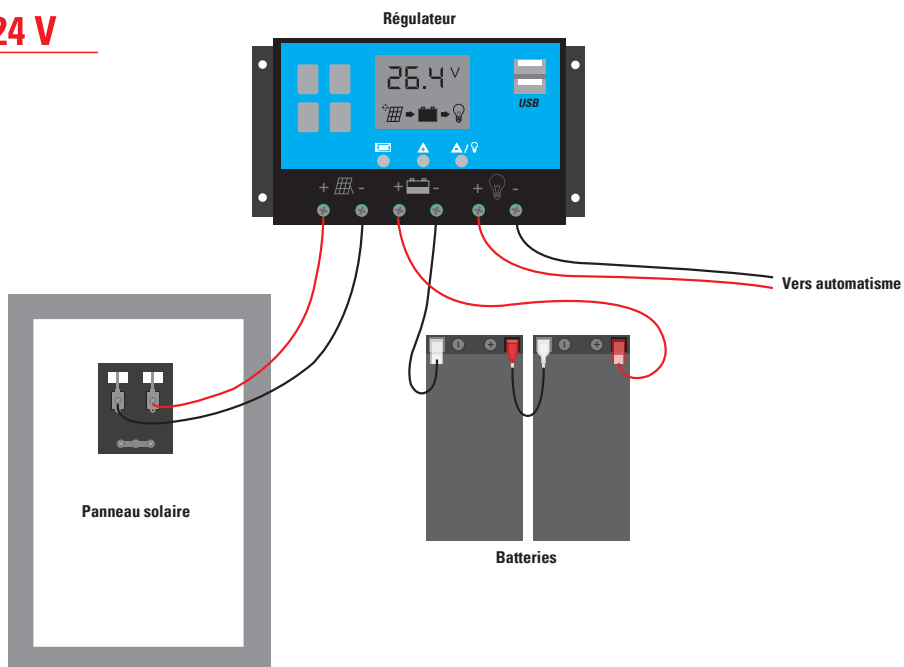
Chargement : 8h de plein soleil

B- BRANCHEMENT GÉNÉRAL (MULTI-MARQUES)

12 V



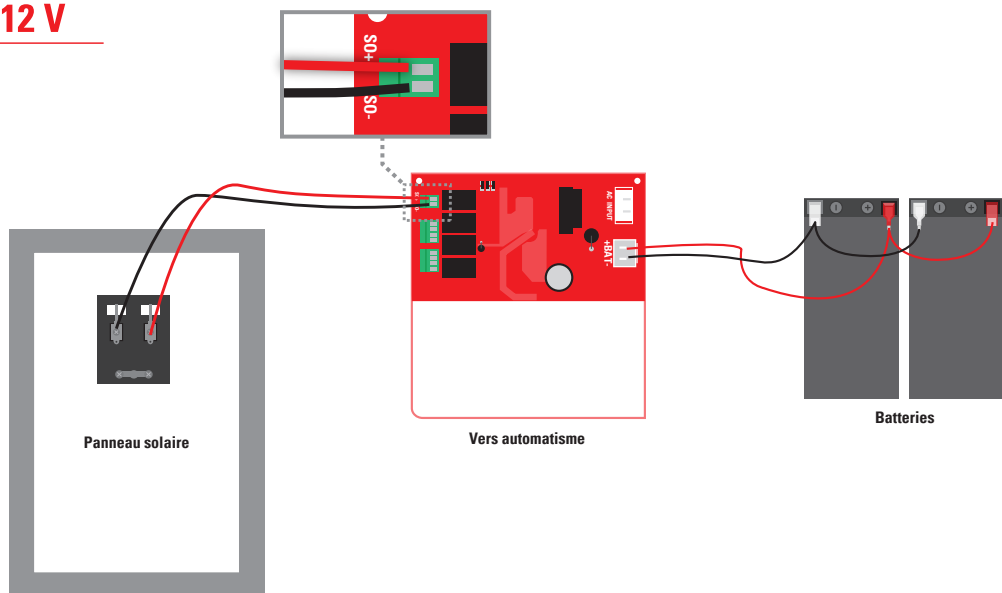
24 V



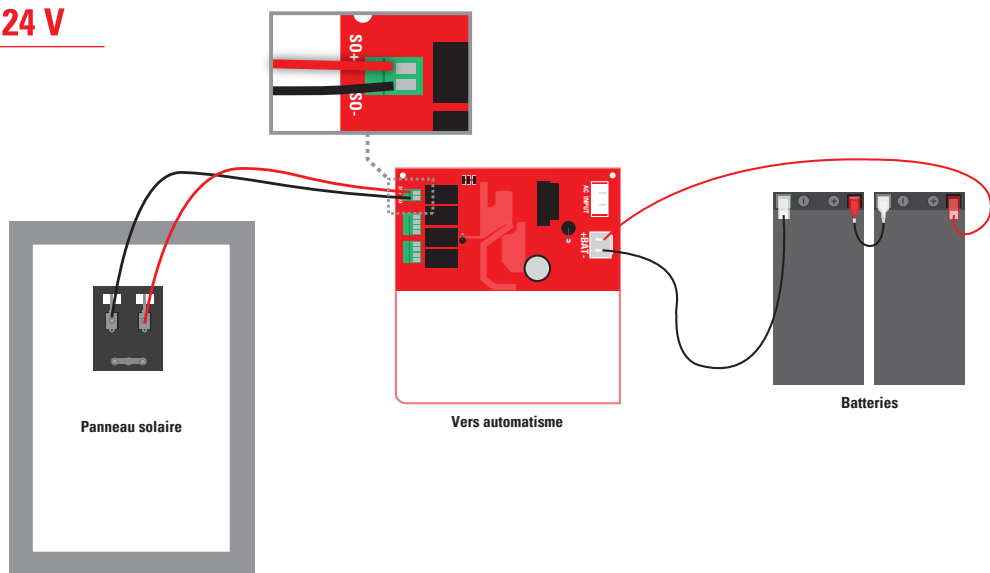
C- BRANCHEMENT SPÉCIFIQUE AVEC MOTORISATION SCS SENTINEL

Modèle 1 et 2 - portail battant platine P100 PCB1 - P100 PCB2

12 V

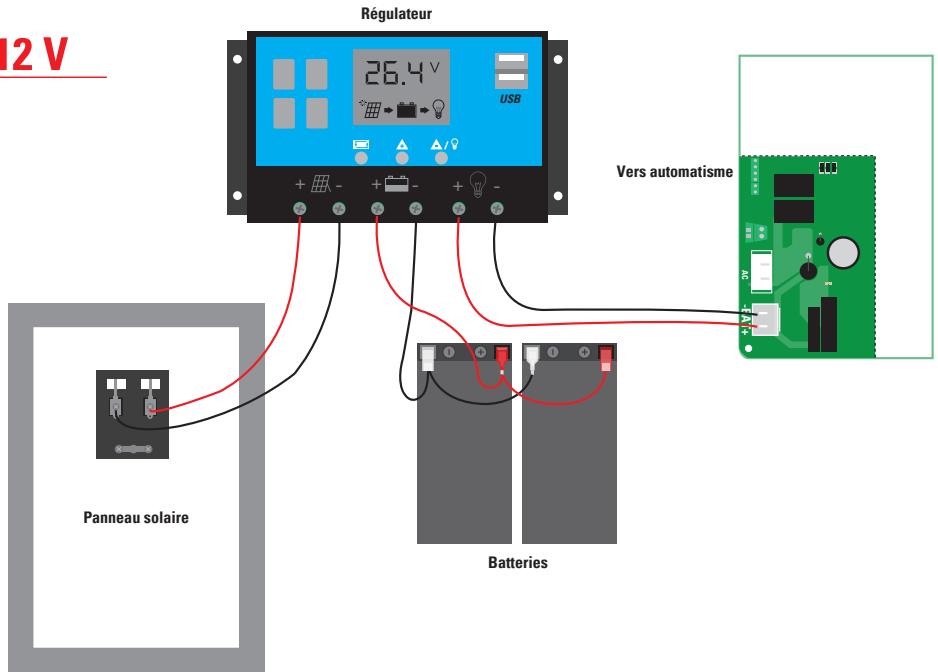


24 V

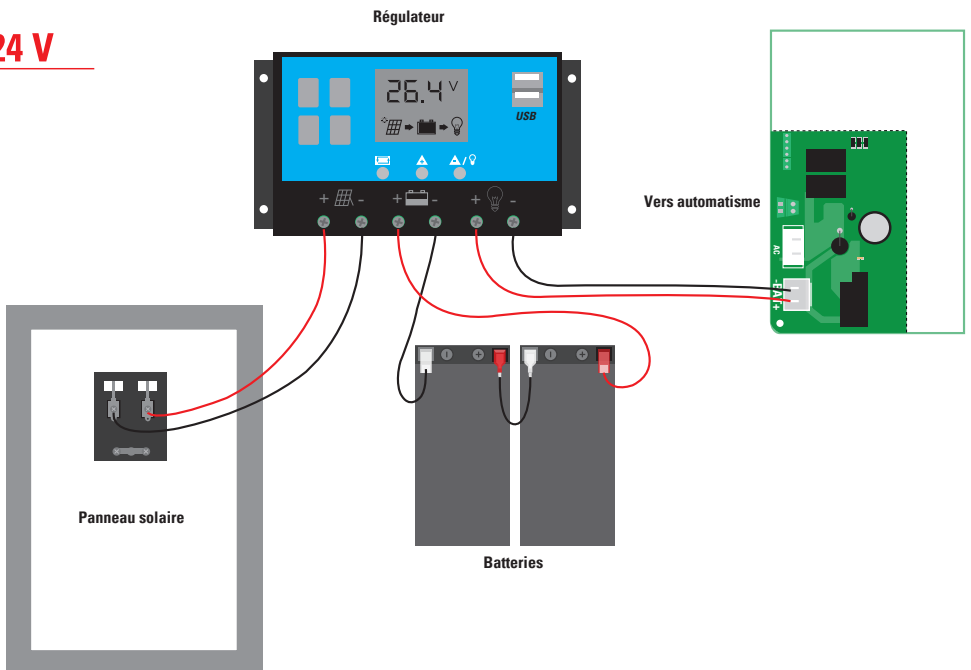


Modèle 3 - portail coulissant platine P501 BH

12 V

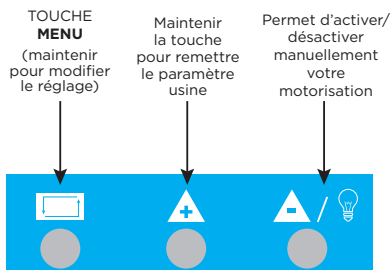
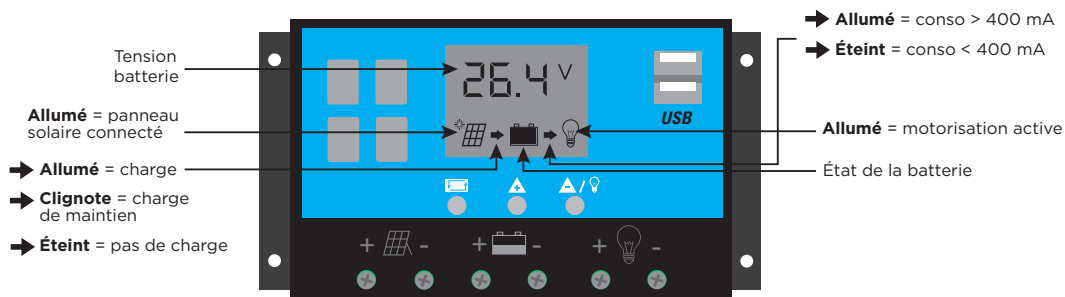


24 V

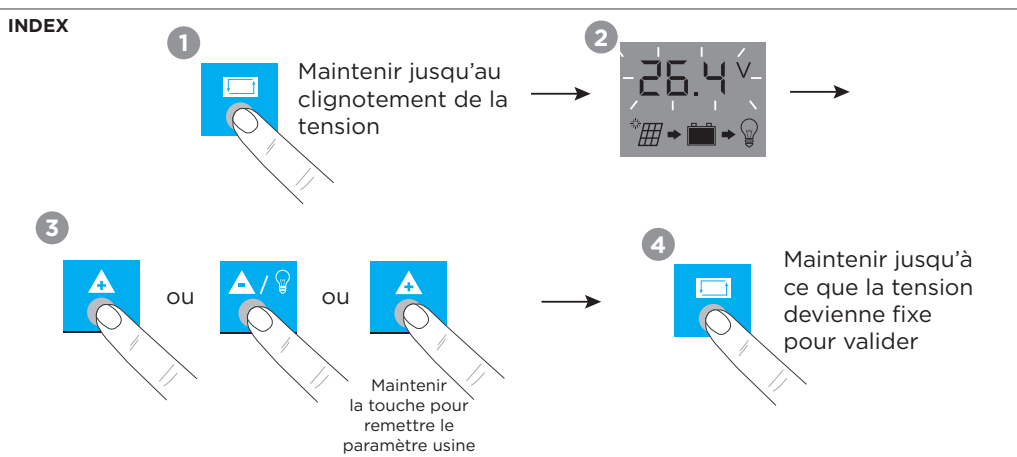


D- UTILISATION

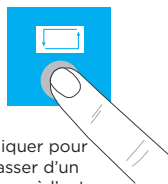
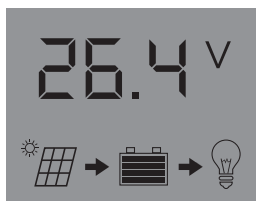
1 Menu principal



2 Réglage si nécessaire



1 Écran principal



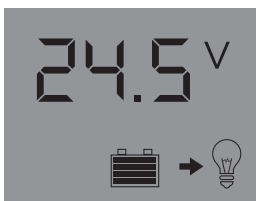
Cliquer pour passer d'un menu à l'autre

2 Seuil de la tension de charge de maintien



VOIR INDEX pour réglage

3 Seuil de la tension d'activation de la motorisation



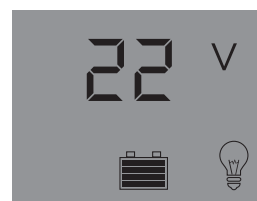
Cliquer pour passer d'un menu à l'autre

VOIR INDEX pour réglage



Cliquer pour passer d'un menu à l'autre

4 Seuil de la tension de désactivation de la motorisation



VOIR INDEX pour réglage

5



Cliquer pour passer d'un menu à l'autre

Ne pas modifier ce réglage



Cliquer pour passer d'un menu à l'autre

6




VOIR INDEX pour réglage si changement autre modèle de batteries

601 = batteries SolarGate
Tension 14,4V

602 = batteries au gel
Tension 14,2V

603 = batteries humide
Tension 14,6V

E- AIDE AU DÉPANNAGE

Problème	Solution
La tension des batteries est faible (>22V) et le témoin  est éteint	Déconnecter l'automatisme du régulateur, puis attendre. Ne rebrancher l'automatisme que lorsque la charge est redevenue normale ou réorienter votre panneau solaire de manière à ce qu'il soit mieux exposé aux rayons du soleil.
Les batteries ne tiennent pas la charge	Vérifier la consommation courant au repos de votre automatisme qui doit être < 40 mA, et vérifier l'exposition du panneau qui ne doit jamais être à l'ombre et orienté plein sud.

F- ASSISTANCE TÉLÉPHONIQUE

En cas de besoin, vous pouvez prendre contact avec notre assistance technique au numéro ci-dessous

0 892 350 490

Service 0,35 €/min
+ prix appel

Horaire hotline, voir sur le site internet : scs-sentinel.com

Nous vous demandons au préalable de relever la référence de votre matériel sur la notice ou l'emballage de votre produit. Nous vous conseillons également de brancher votre matériel « en fils volants » sur une table après avoir démonté les éléments afin de facilement déterminer si c'est le matériel ou l'installation qui pose problème.

G- GARANTIE



N'oubliez pas d'enregistrer votre garantie dans le mois suivant votre achat en vous rendant sur notre site internet : www.scs-laboutique.com/accountProduct/declaration.

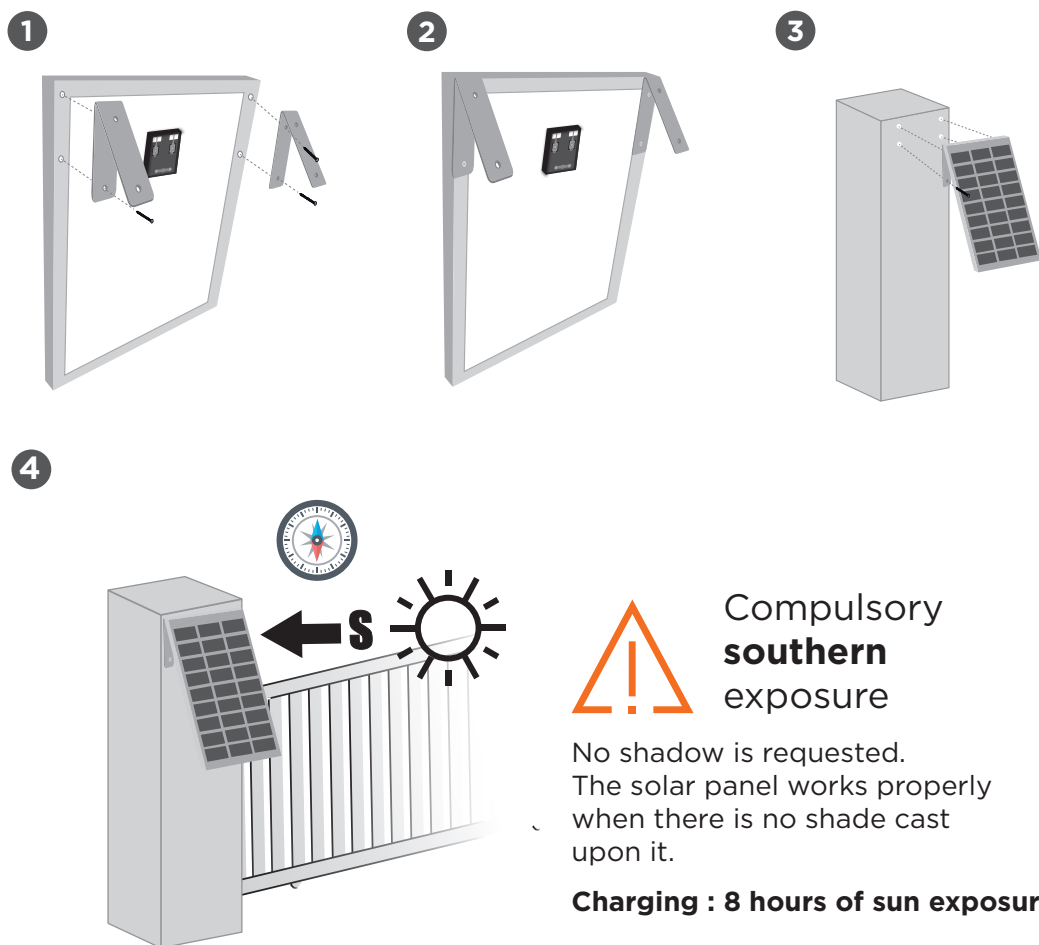
Conservez soigneusement le code-barre ainsi que votre justificatif d'achat, il vous sera demandé pour faire jouer la garantie.

Il est impératif de garder une preuve d'achat durant toute la période de garantie.

INDEX

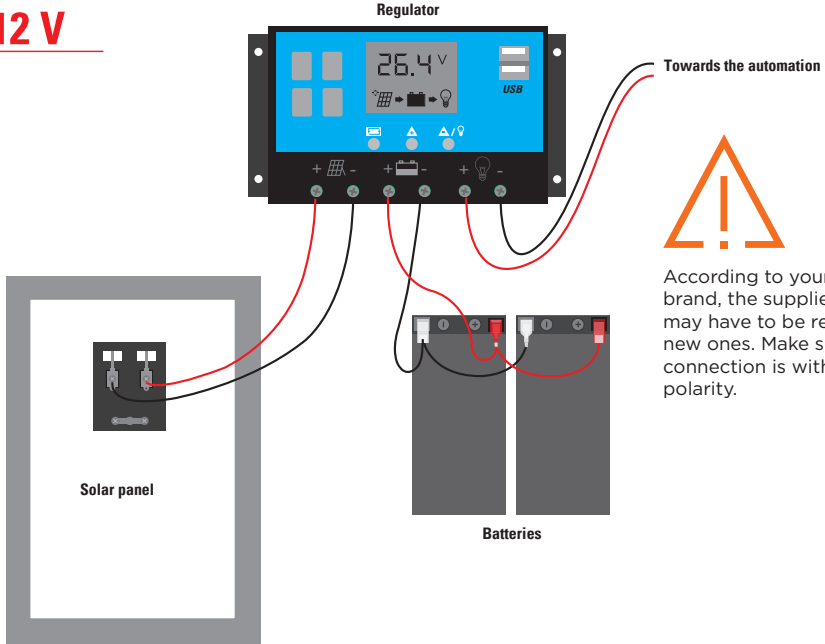
A - Installing	3
B - General wiring (all brands)	4
C - Wiring with SCS Sentinel gate openers	5
D - Use	7
E - Aide au dépannage	9
F - Warranty	9

A- INSTALLATION



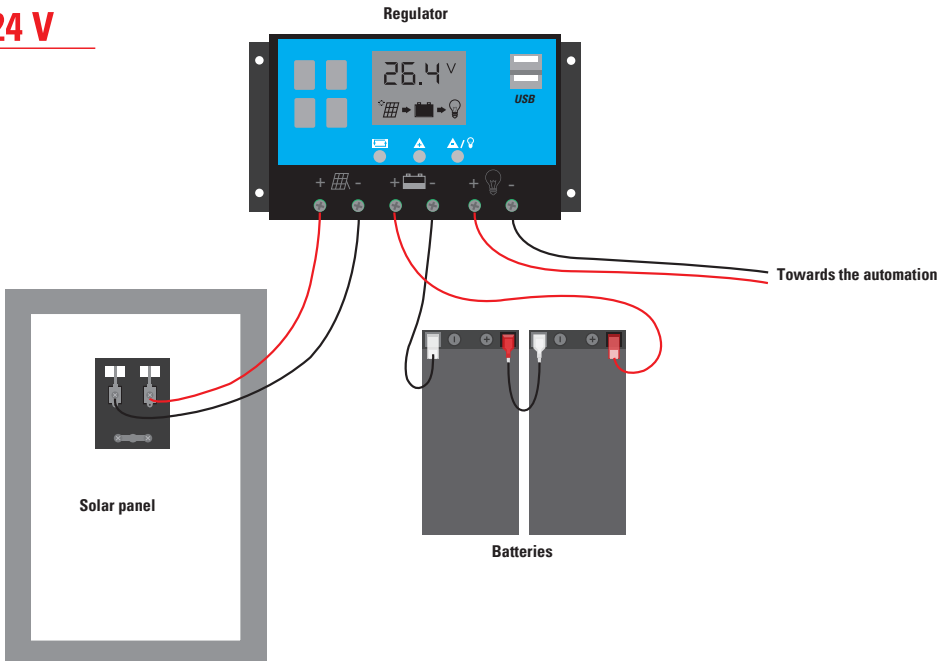
B- GENERAL WIRING (ALL BRANDS)

12 V



According to your automation brand, the supplied terminals may have to be replaced by new ones. Make sure that the connection is with correct polarity.

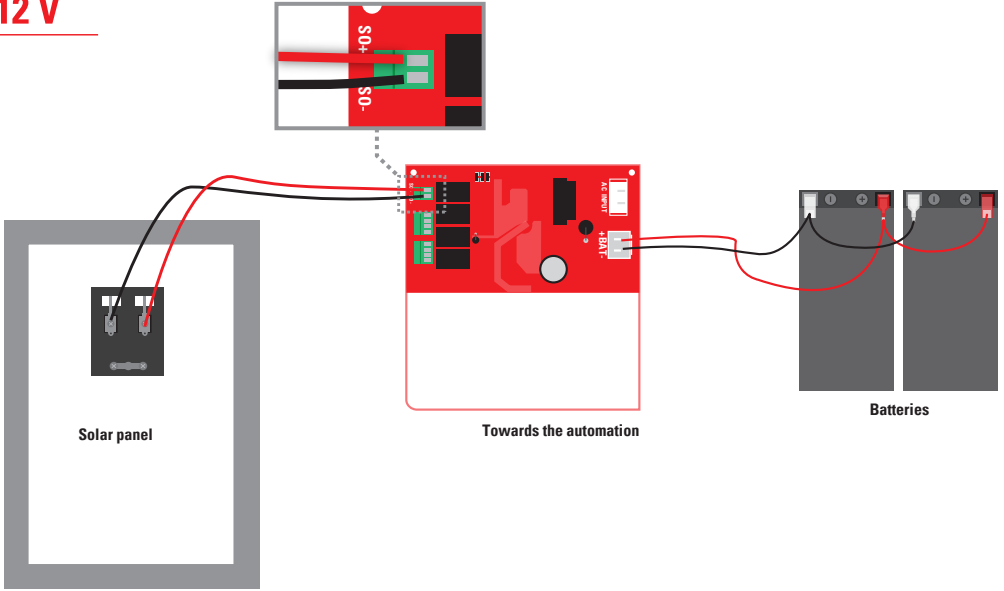
24 V



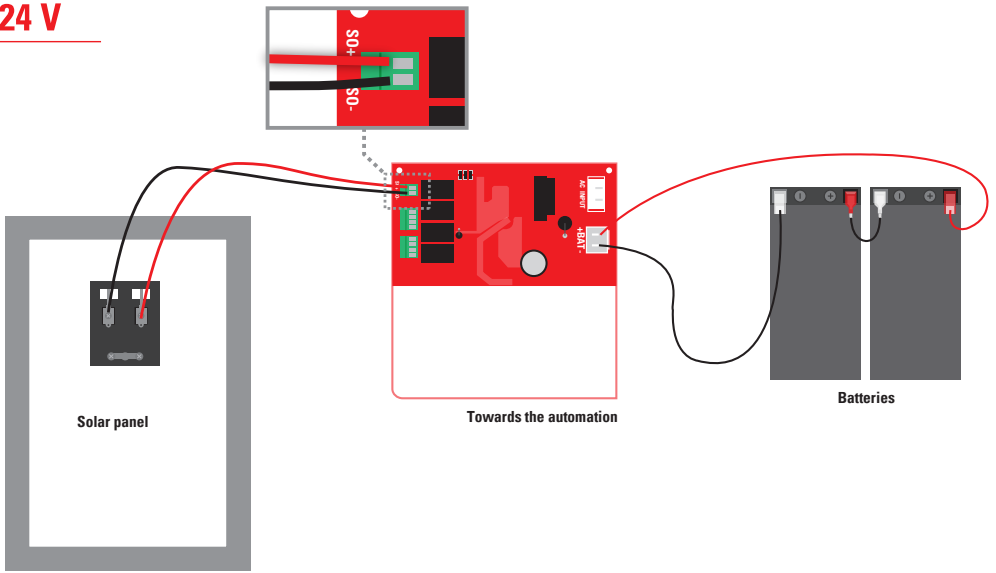
C- WIRING WITH SCS SENTINEL GATE OPENER

Models 1 and 2 - Swing gates - Electronic card P100 PCB1 - P100 PCB2

12 V

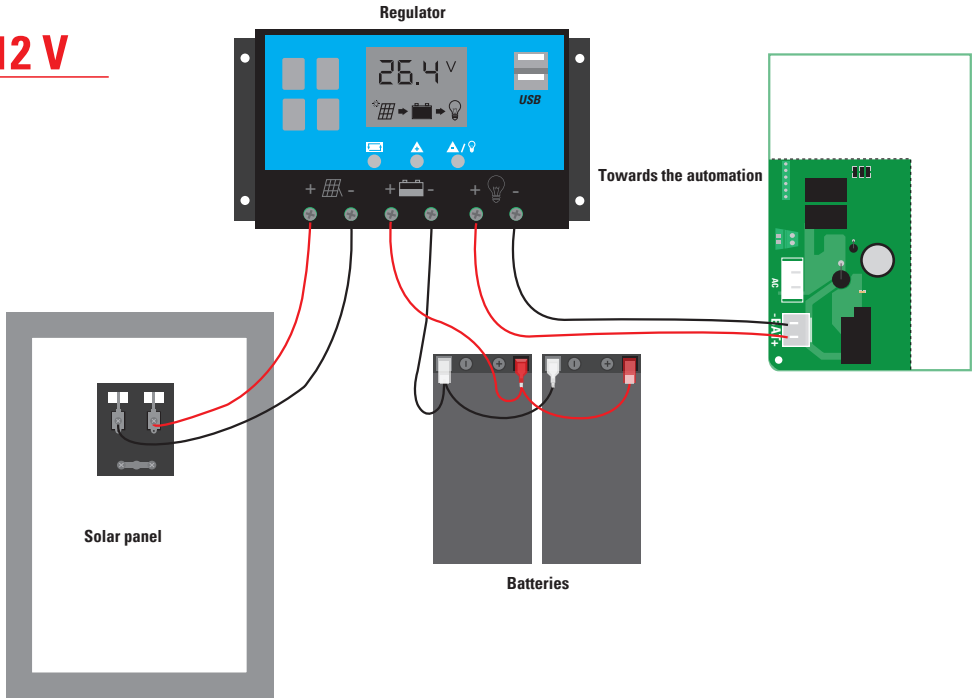


24 V

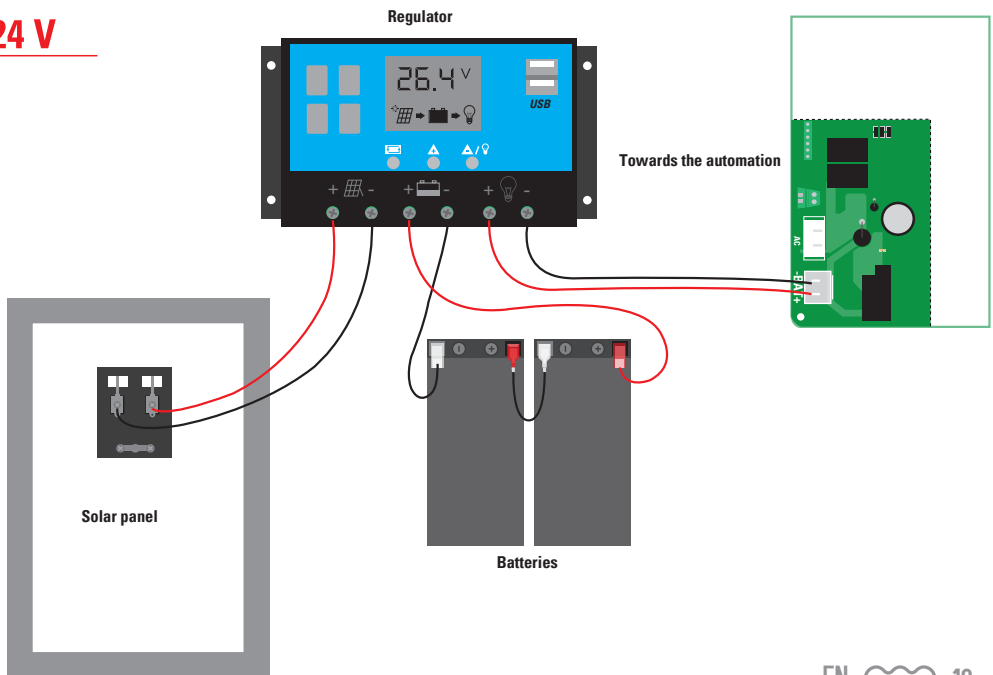


Model 3 - sliding gate - electronic card P501 BH

12 V

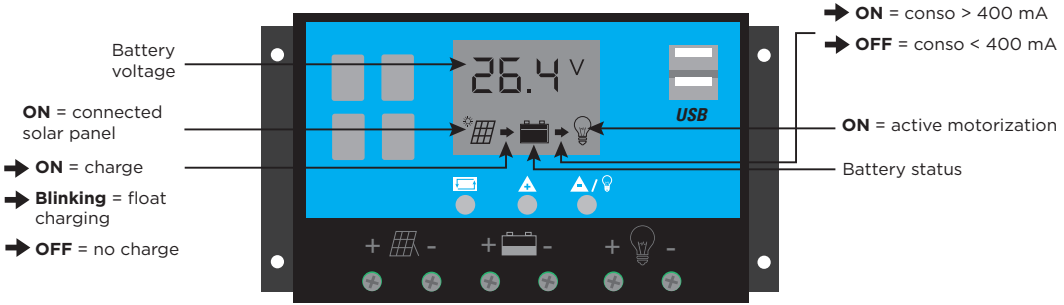


24 V



D- USING

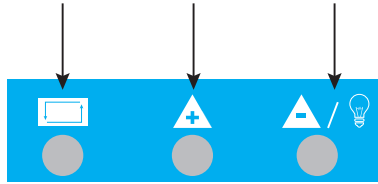
1 Main menu



MENU KEYS
(Maintain to modify the setting)

Maintain the button to return to the factory defaults

Allow to manually activate/deactivate your automatism



2 Settings (if necessary)

INDEX

1



Hold until voltage flashing

2



3



or



or



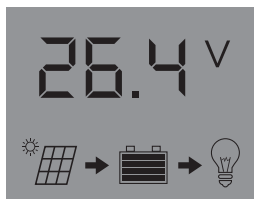
Hold to reset

4



Hold until the voltage becomes fixed

1 Main screen



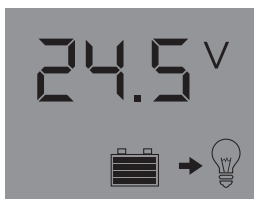
Switch from a setting item to another

2 Voltage threshold of the float charging



See index for settings

3 Activation voltage threshold of the automatism



See index for settings



Switch from a setting item to another

4 Deactivation voltage threshold of the automatism



See index for settings



Switch from a setting item to another

5



Do not modify the setting



Switch from a setting item to another

6



See INDEX for settings if changing of batteries model

601 = SolarGate batteries
Voltage 14,4V

602 = gel batteries
Voltage 14,2V

603 = flood batteries
Voltage 14,6V

E- TROUBLESHOOTING

Problem	Solution
The battery voltage is low and the indicator light is OFF	Disconnect the automation from the regulator and wait. Only connect the automation again, once the batteries charging is back to normal and improve the sun exposure of the solar panel.
The batteries cannot hold their charge.	Check the stand by power consumption which must reach <40 mA and check the panel sun exposure. There should not be any shade cast upon it.

F- WARRANTY



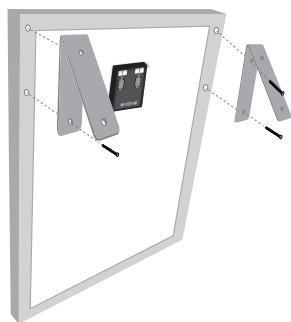
Do not forget to register the warranty within the month following the date of purchase on our website : www.scs-laboutique.com/accountProduct/declaration.
The invoice will be required as proof of purchase date.

INDICE

A - Installazione	3
B - Cablaggio generale (diverse marche)	4
C - Cablaggio specifiche per motorizzazione SCS Sentinel	5
D - Uso	7
E - Aiuto alla riparazione	9
F - Assistenza telefonica	9
G - Garanzia	9

A- INSTALLAZIONE

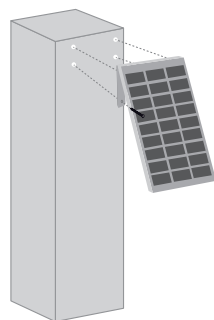
1



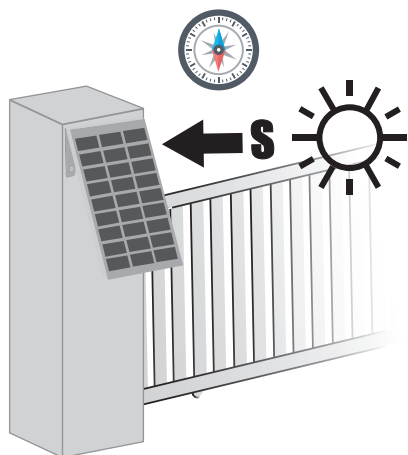
2



3



4



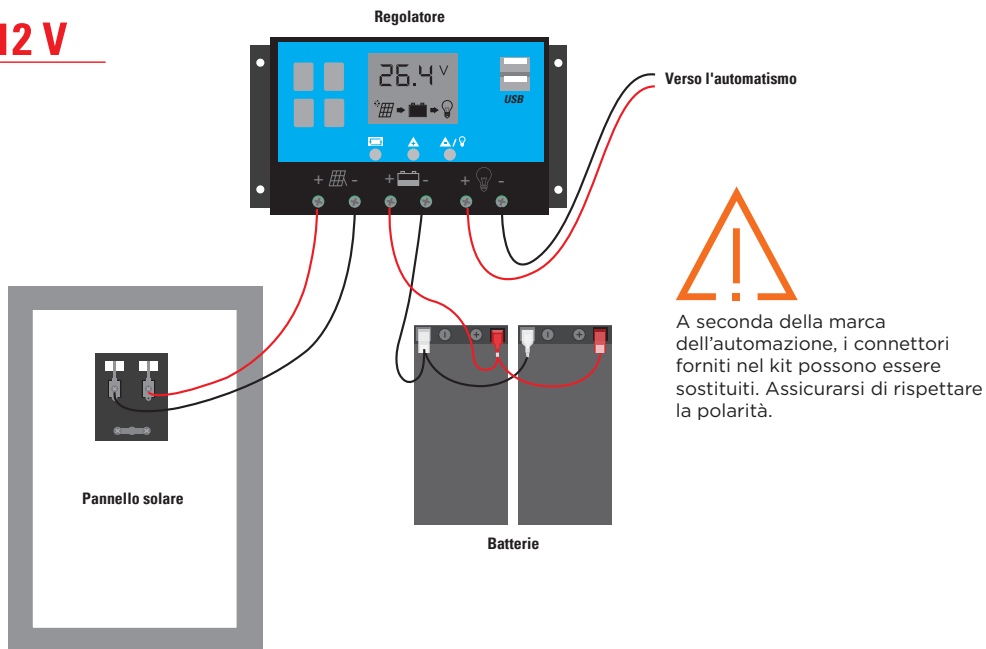
Esposizione
sud
obbligatoria

Il pannello non deve mai
essere esposto all'ombra

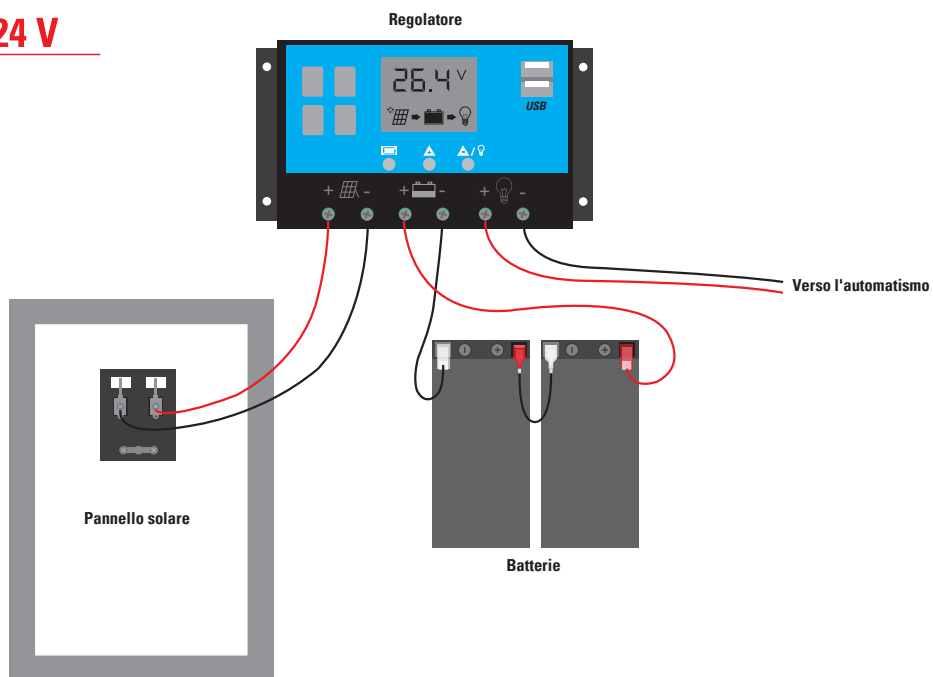
Carica: 8 ore di sole

B- CABLAGGIO GENERALE (DIVERSE MARCHE)

12 V



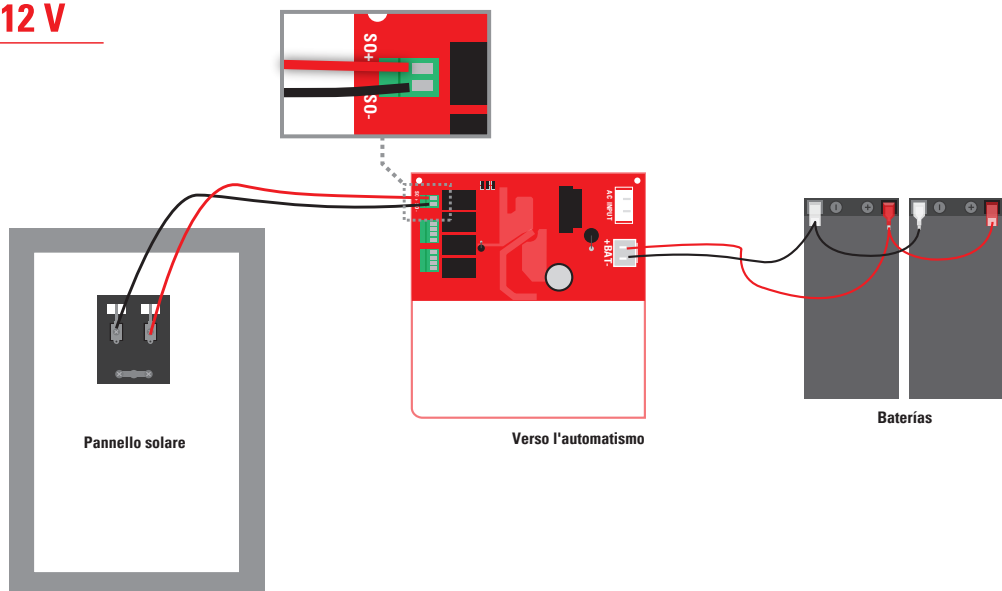
24 V



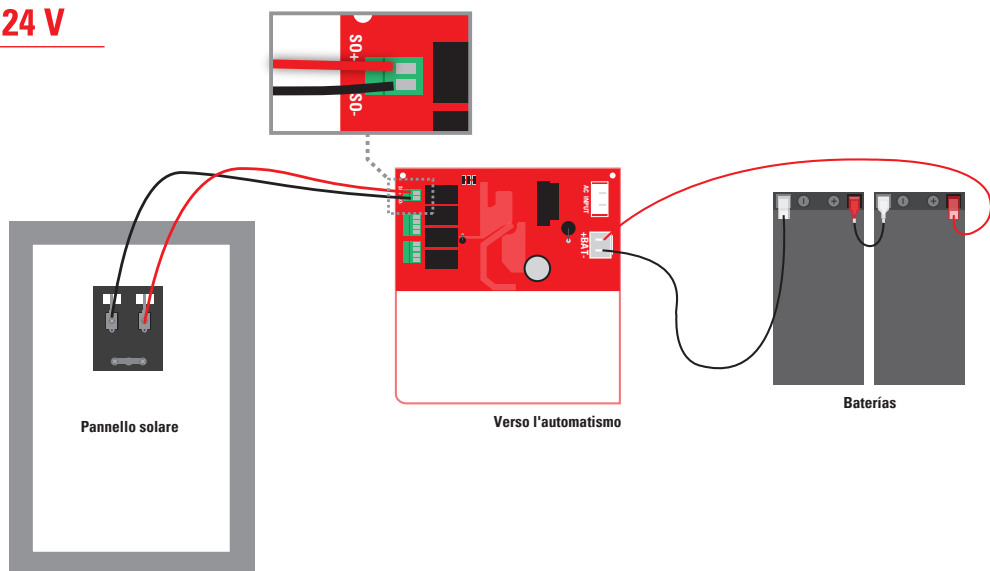
C- CABLAGGIO SCS SENTINEL

Modello 1 y 2 - cancello a battente platine P100 PCB1 - P100 PCB2

12 V

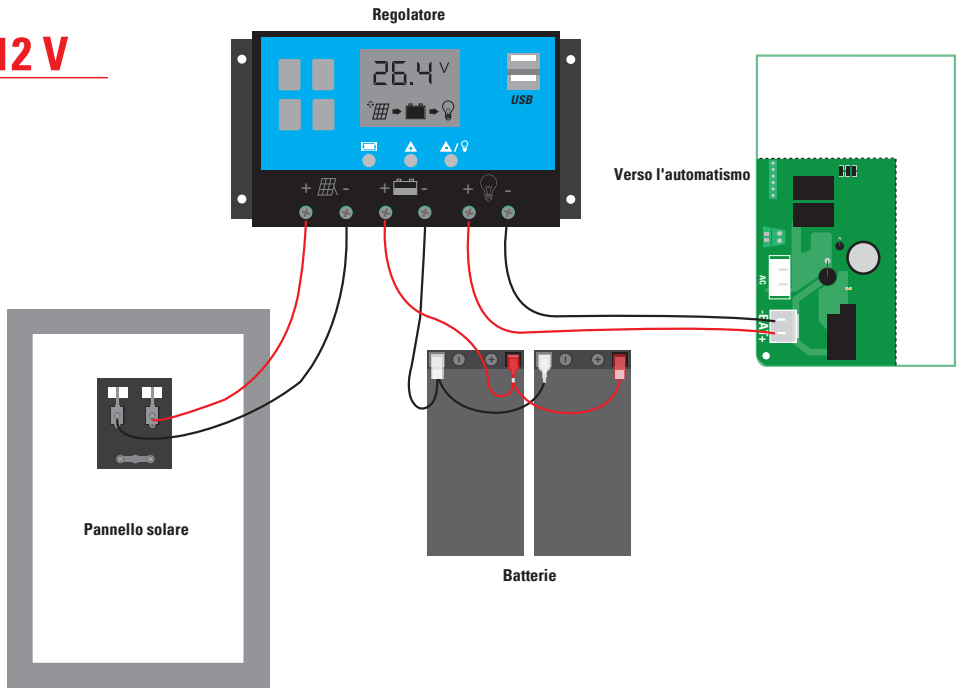


24 V

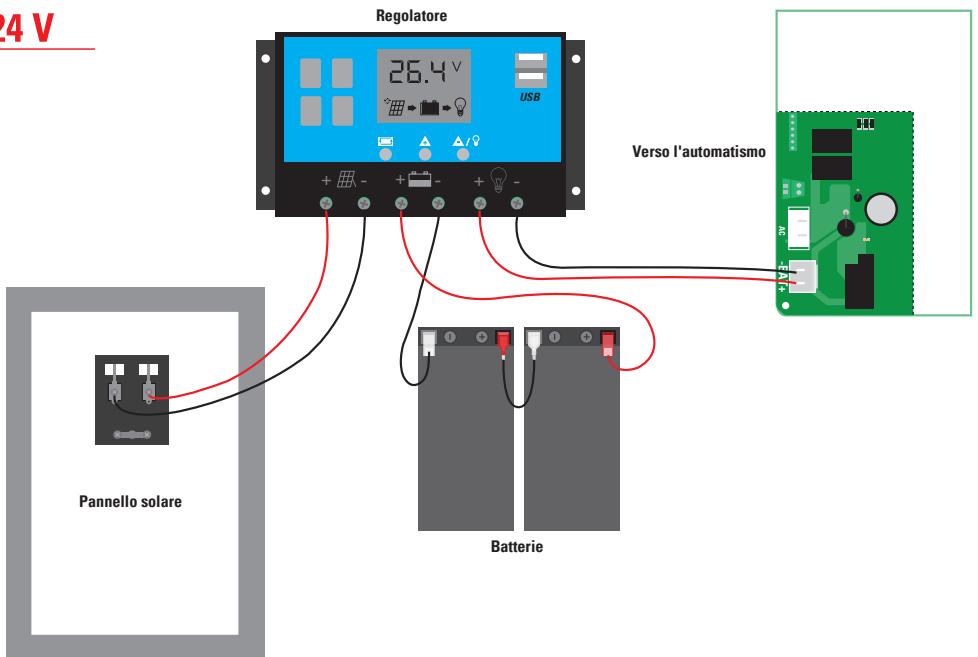


Modello 3 - cancello scorrevole P501 BH

12 V

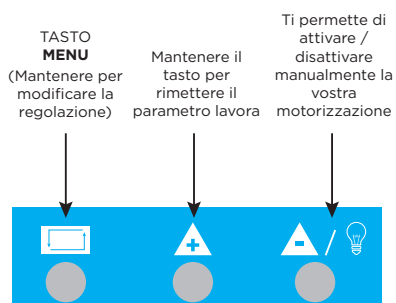
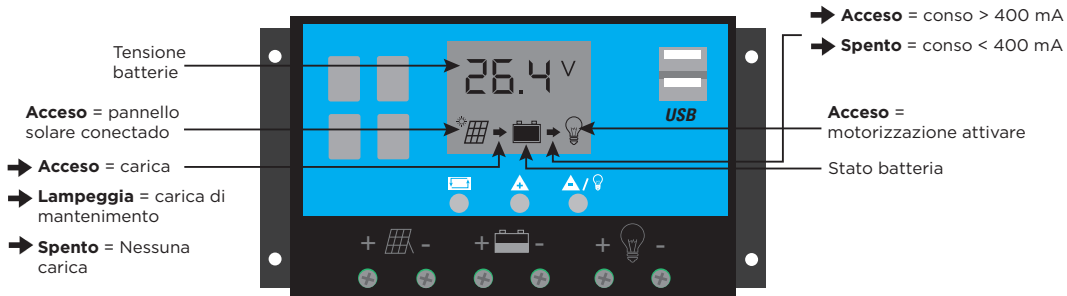


24 V



D- UTILIZZO

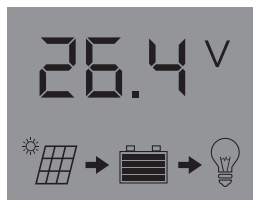
1 Menu principale



2 Regolazione se necessario

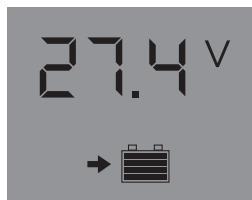


1 schermo principale



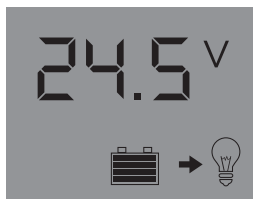
Passaggio da un modo all'altro

2 Soglia della tensione di carica di mantenimento



Vedere INDEX per regolazioni

3 Soglia della tensione di attivazione della motorizzazione



Vedere INDEX per regolazioni



Passaggio da un modo all'altro

4 Soglia della tensione di disattivazione della motorizzazione



Vedere INDEX per regolazioni



Passaggio da un modo all'altro

5



Non modificare questa regolazione



Passaggio da un modo all'altro

6



Vedere INDEX per regolazioni si cambio altro modello di batterie

601 = batterie SolarGate
Tension 14,4V

602 = batterie al gelo
Tension 14,2V

603 = batterie umide
Tension 14,6V

E- AIUTO

Problema	Soluzione
La tensione delle batterie è bassa e la spia è spenta	Disconnettere l'automatismo dal regolatore, quindi attendere. Riconnettere l'automatismo solo quando la carica è ritornata normale, oppure riorientare il pannello solare in modo che sia esposto maggiormente ai raggi del sole.
Le batterie non tengono la carica.	Verificare il consumo di corrente a riposo dell'automatismo, che deve essere <40 mA. Verificare l'esposizione del pannello, che deve essere orientato verso sud e mai all'ombra.

E- ASSISTANZA TELEFONICA

I tecnici del servizio post-vendita sono disponibili al numero :

199 110 000 0.34€/min

In caso di allungamento del prodotto durante l'installazione o pochi giorni dopo la stessa si invita a contattare il servizio clienti rimanendo in prossimità del prodotto in modo da consentire ai nostri tecnici di diagnosticare subito l'origine del problema.

F- GARANZIA



Non dimenticate di registrare sul nostro sito internet la vostra garanzia entro il mese successivo al vostro acquisto:

www.scs-laboutique.com/accountProduct/declaration.

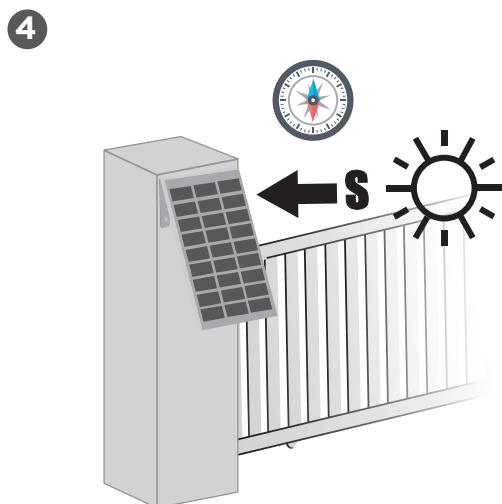
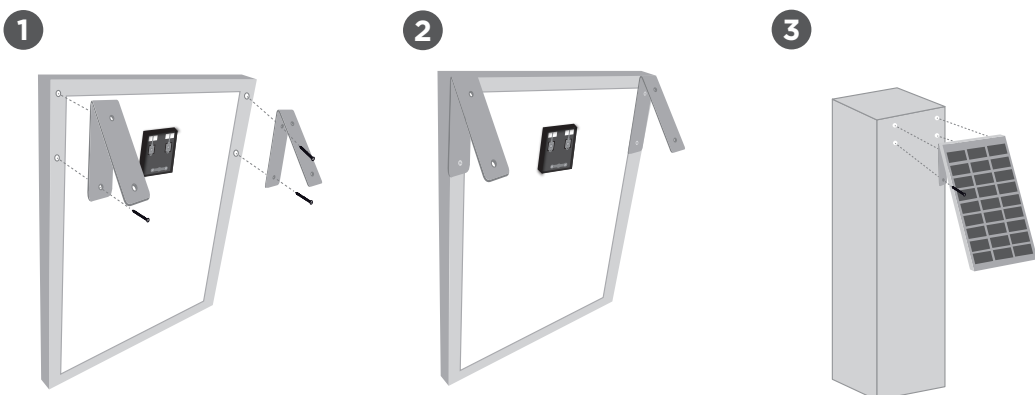
Conservare accuratamente sia il codice a barre che lo scontrino: vi saranno richiesti per far valere la garanzia.

È obbligatorio conservare una prova d'acquisto per tutta la durata della garanzia.

ÍNDICE

A - Instalación	3
B - Cableado general (multimarcas)	4
C - Cableado específico por automatismos SCS Sentinel	5
D - Uso	7
E - Ayuda para la reparación	9
F - Garantía	9

A- INSTALACIÓN



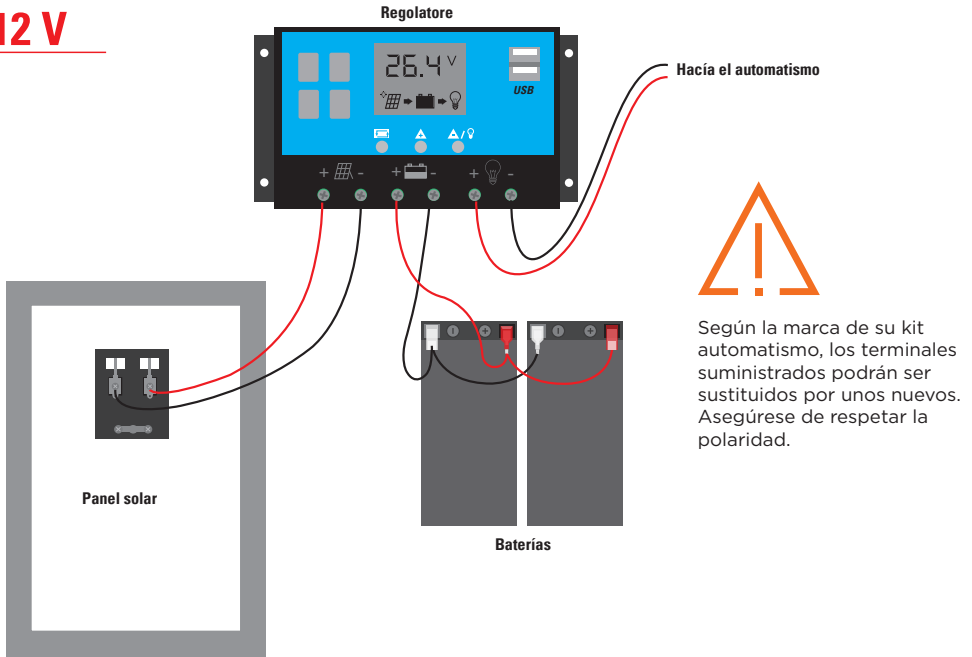
Orientación
sur
obligatoria

El panel solar no se debe poner a la sombra.

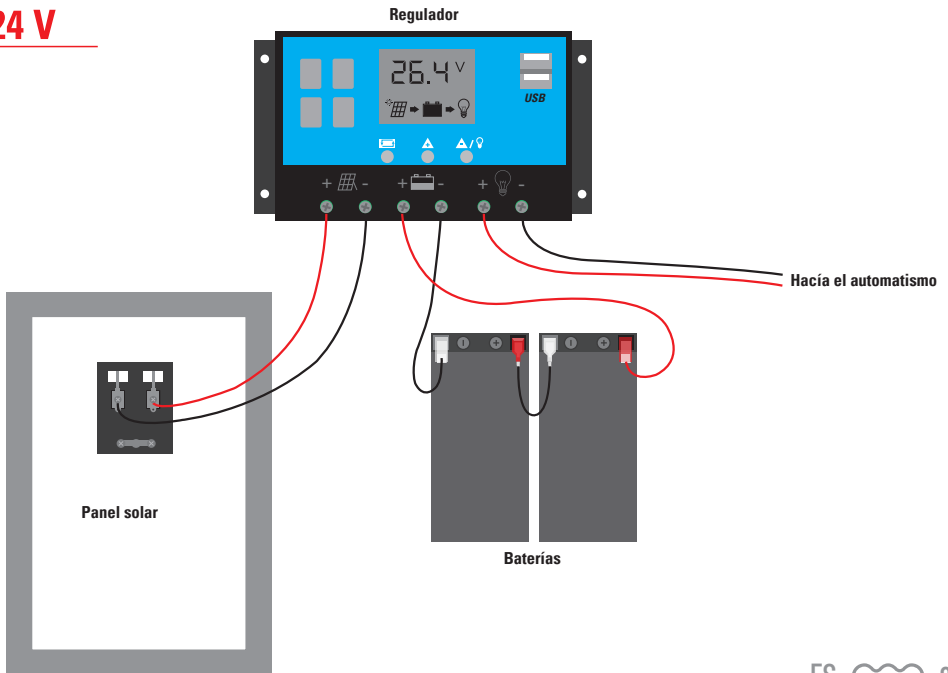
Carga : 8 horas de sol

B- CABLEADO GENERAL (MULTIMARCAS)

12 V



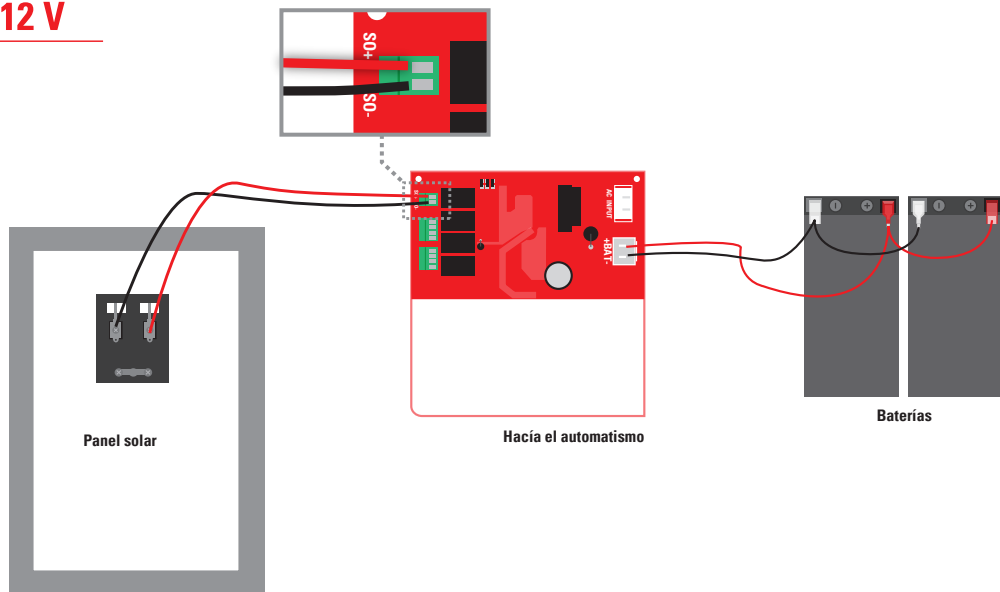
24 V



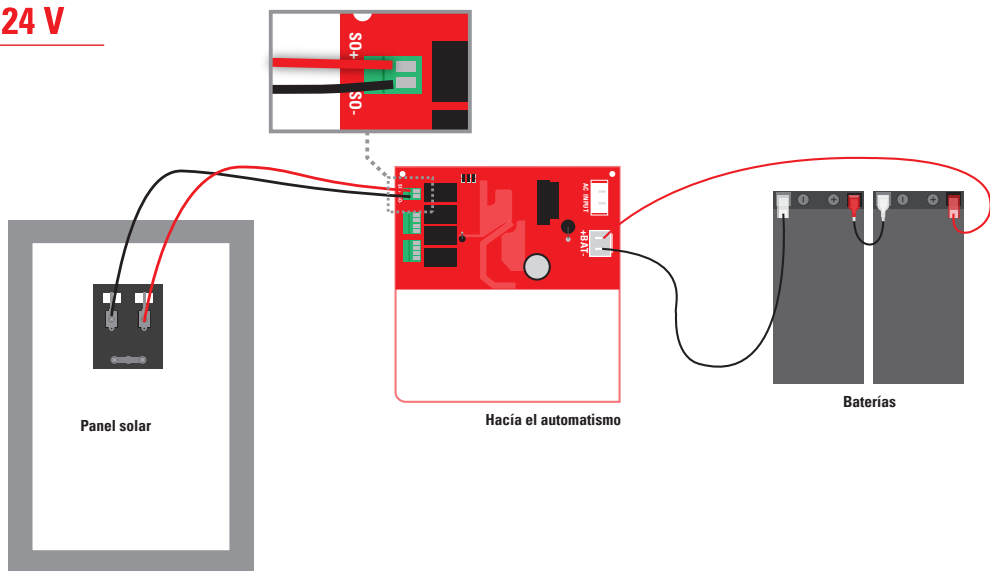
C- CABLEADO SCS SENTINEL

Modelo 1 y 2 - portal dos batientes platine P100 PCB1 - P100 PCB2

12 V

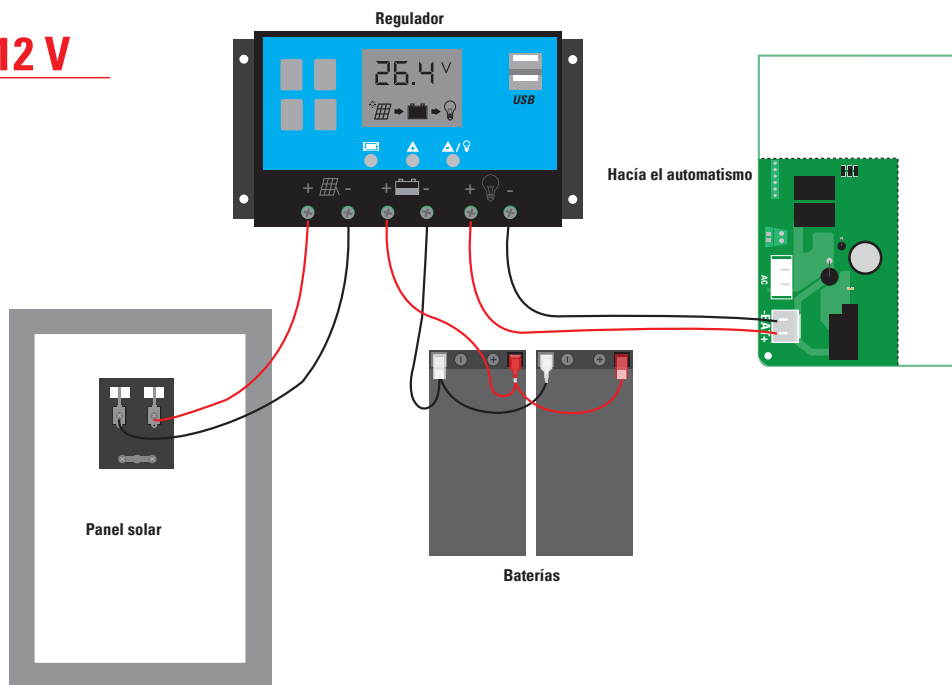


24 V

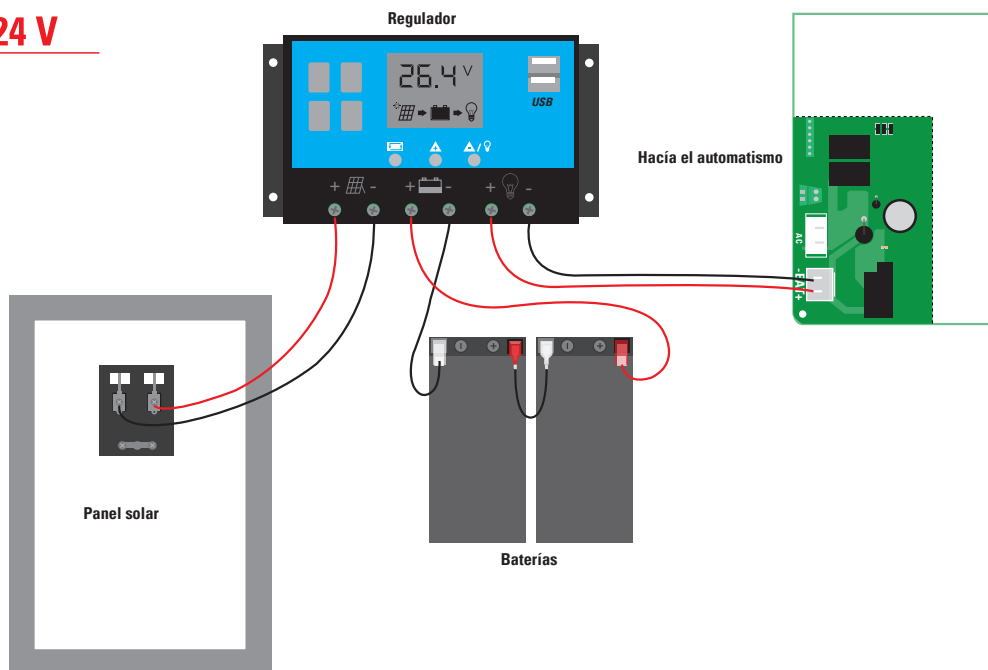


Modelo 3 - puerta corredera platine P501 BH

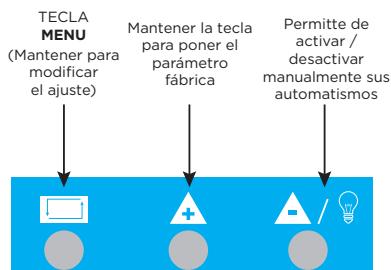
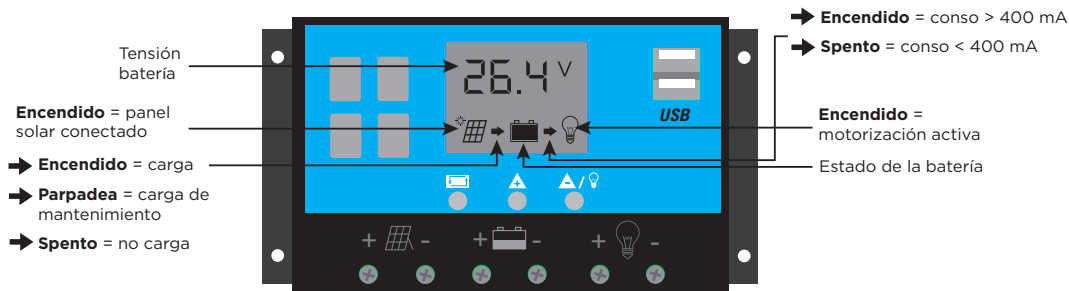
12 V



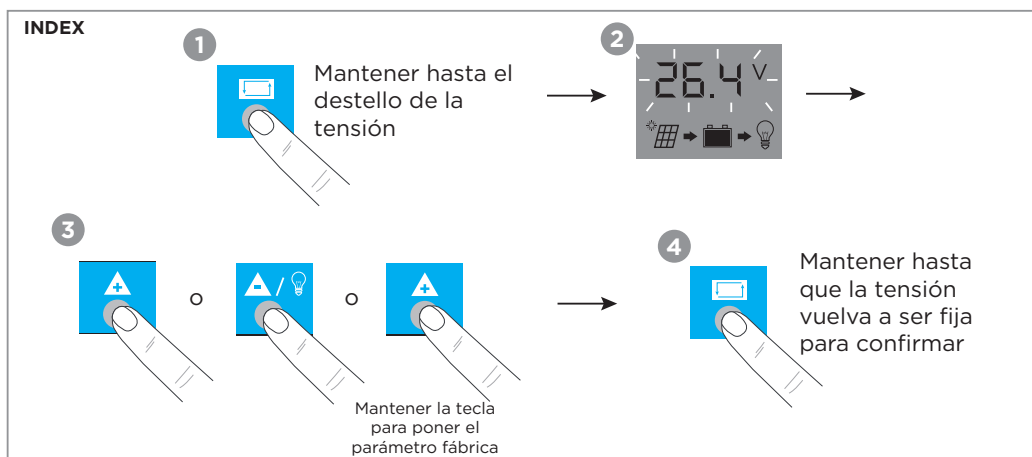
24 V



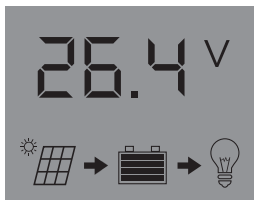
1 Menú principal



2 Ajustes si necesario



1 Pantalla principal



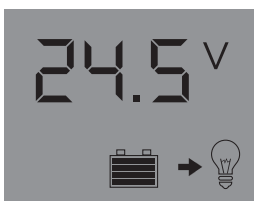
Paso de un modo al otro

2 Umbral de la tensión de carga de mantenimiento



Ver INDEX para ajuste

3 Umbral de la tensión de activación de sus automatismos



Paso de un modo al otro

Ver INDEX para ajuste

4 Umbral de la tensión de desactivación de sus automatismos



Ver INDEX para ajuste

5



Paso de un modo al otro

No modificar este ajuste



Paso de un modo al otro

6



Ver INDEX para ajuste si cambio otro modelo de baterías

b01 = baterías SolarGate
Tension 14,4V

b02 = baterías a las heladas
Tension 14,2V

b03 = baterías húmedas
Tension 14,6V

E- AYUDA

Problema	Solución
La tensión de las baterías es baja y la luz luminosa está apagada.	Desconectar el automatismo del regulador y esperar. No conectarlo de nuevo sino cuando la carga ha vuelto a un estado normal y reorientar el panel solar más al sol.
Las baterías no soportan la carga.	Verificar el consumo de energía que no debe superar <40 mA y verificar la exposición al sol y que no haya sombra en el panel.

F- GARANTÍA



Es importante registrar su garantía durante el mes posterior a su compra en :
www.scs-laboutique.com/accountProduct/declaration.
El recibo o la factura dan prueba de la fecha de compra.

Toutes les infos sur :
www.scs-sentinel.com



SCS sentinel

Route de St Symphorien
85130 Les Landes Génusson
FRANCE